

# BALL PYTHON

## PYTHON REGIUS



### INTRODUCTION

Ball pythons, despite common myths, can be relatively friendly snakes! They can grow at a rapid rate and can live from 20-30 years, and therefore can be a very long-time commitment. Ball pythons come in a wide variety of colours and patterns. They can be friendly, as long as they are handled on a daily basis.

### HABITAT

Humidity

55%

Temperature (Day)

80-95F

Temperature (Night)

75F

**CARE LEVEL:** DIFFICULT

**LIFESPAN:** 20-30 YEARS

**SIZE:**

4-5 FEET (FEMALE)

3-3.5 FEET (MALE)

**MORPHS:** GHOST, CLOWN, BANANA, CINNAMON, AXANTHIC, AND MORE !

### ENCLOSURE BASICS

Minimum tank size for one adult ball python: 40 gallons

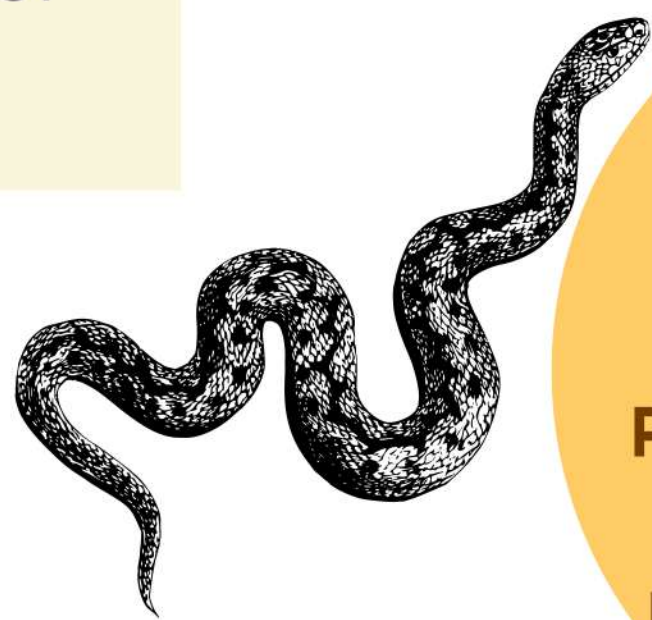
Juvenile ball pythons are best kept in smaller enclosures at

approximately 20 gallons, and the tank size should be increased as they grow. Ball pythons like to feel secure, so many hides are necessary in their enclosure. A large water dish is also needed.

The ideal substrate mix is coco fibers, moss, and bark, as they help with maintaining proper humidity levels. An alternate choice that is pre-mixed is the Zoo Med Forest Floor Bedding.

### FEEDING

Ball pythons eat mice and rats, which will increase in size as the ball pythons grow. We suggest feeding frozen mice and rats, as they are easily accessible and prevent selective or picky eaters. Juvenile snakes eat smaller mice more frequently, such as once per week, whereas adult ball pythons may eat large mice or rats, likely every 2-3 weeks. Feeding is best done outside of the enclosure, to avoid confusion between handling time and feeding time while taming.



**FUN FACT:**  
WHEN IN DEFENSE MODE, BALL PYHTONS WILL CURL UP INTO A BALL, HENCE THEIR NAME

HAVE ANY QUESTIONS OR SUGGESTIONS? PLEASE CONTACT OUR MRPETS CUSTOMER SUPPORT TEAM.